

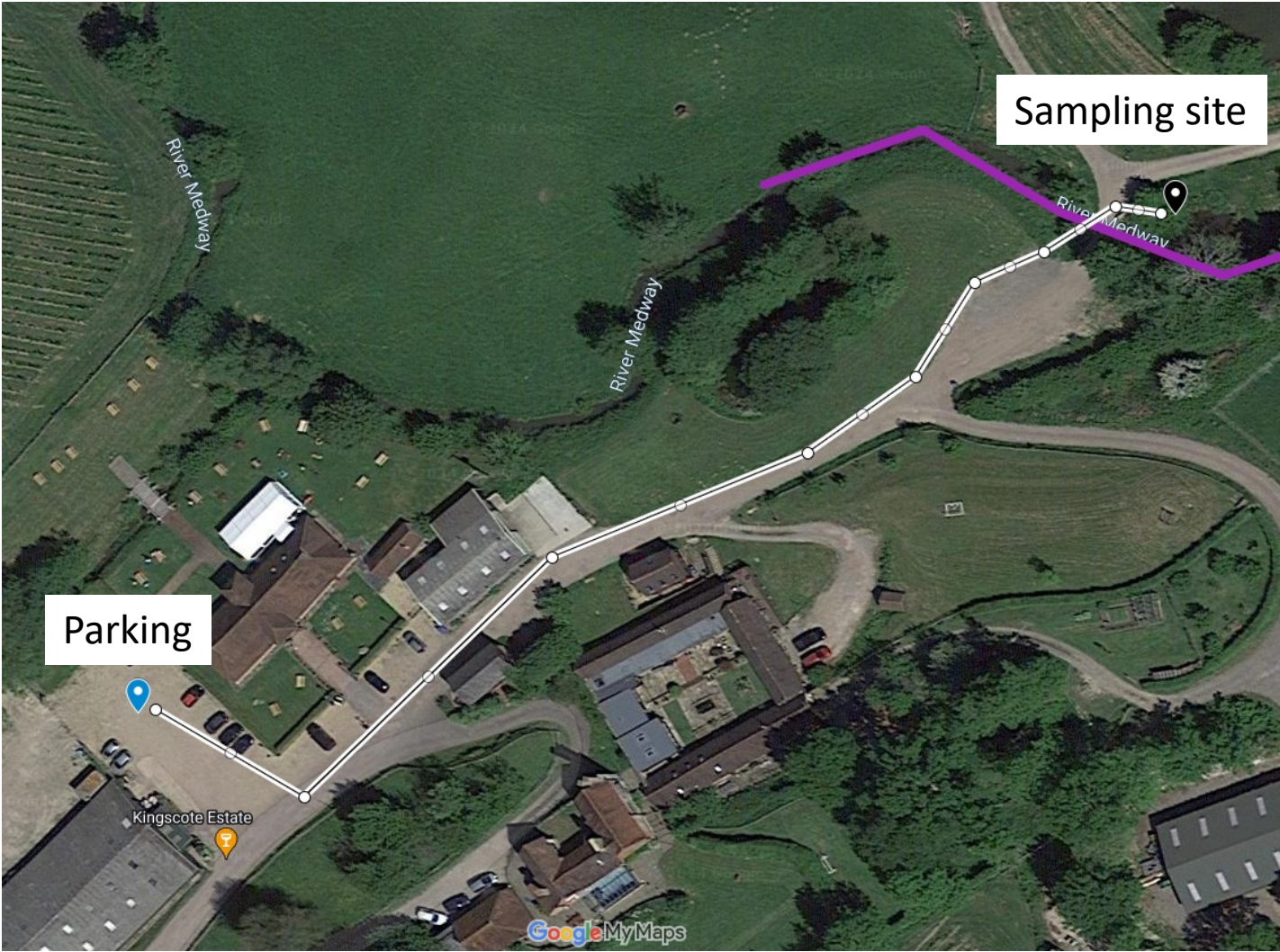
[illegible]

Forest Row FR1

Ripple Effect: A Waterway Resilience Initiative

Kingscote Estate, walk back ~200 metres from car park

Site Code:	FR1
River site coordinates:	51°05'50.1"N 0°02'18.9"W
What3words sampling site:	///venues.split.arts
Access / parking location:	51°05'47.5"N 0°02'27.7"W
What3words access/parking:	///hurray.rabble.vibrate

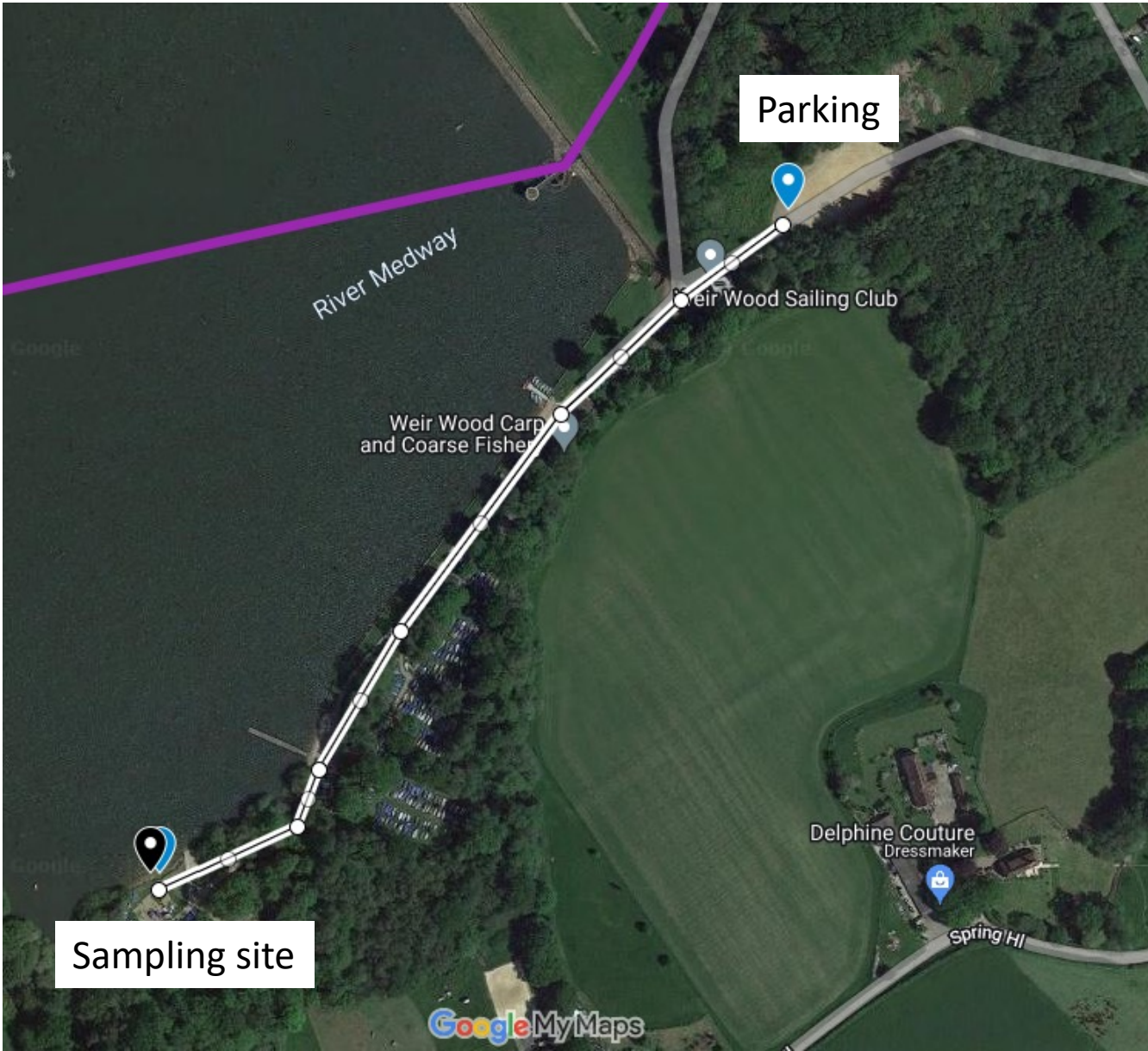


Forest Row FR2

Weir wood reservoir via the Sailing Club, ~500 metres walk from car park

Site Code:	FR2
River site coordinates:	51°05'44.1"N 0°00'18.5"E
What3words sampling site:	///bespoke.uproot.refusals
Access / parking location:	51°05'54.5"N 0°00'34.5"E
What3words access/parking:	///imitate.lightens.aliens

Ripple Effect: A Waterway Resilience Initiative



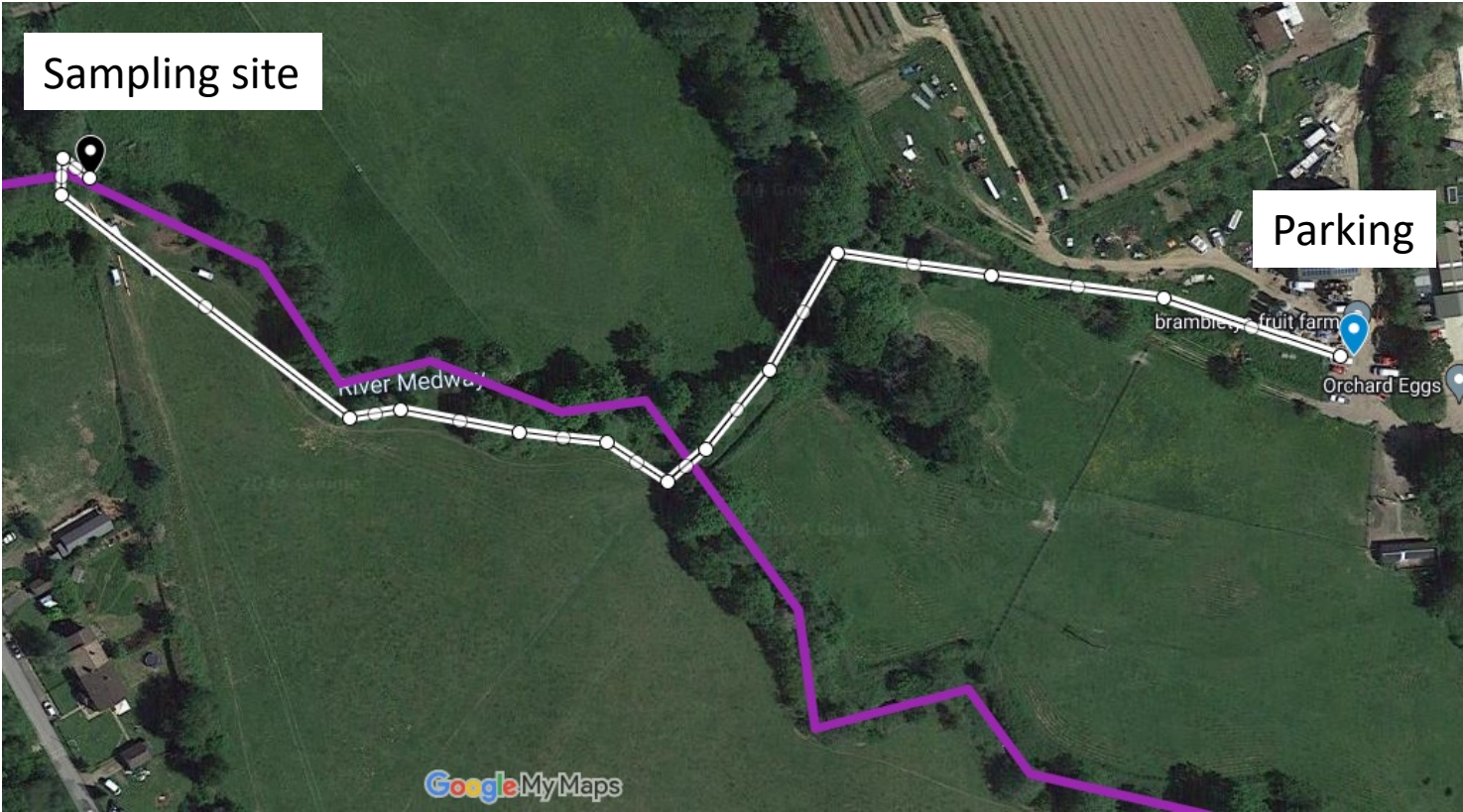
Forest Row FR3

Brambletye, park at fruit farm, walk along path ~400 metres

Site Code:	FR3
River site coordinates:	51°06'02.4"N 0°00'43.0"E
What3words sampling site:	///downhill.worldwide.craziest
Access / parking location:	51°06'00.9"N 0°01'00.2"E
What3words access/parking:	///surprises.acids.backhand



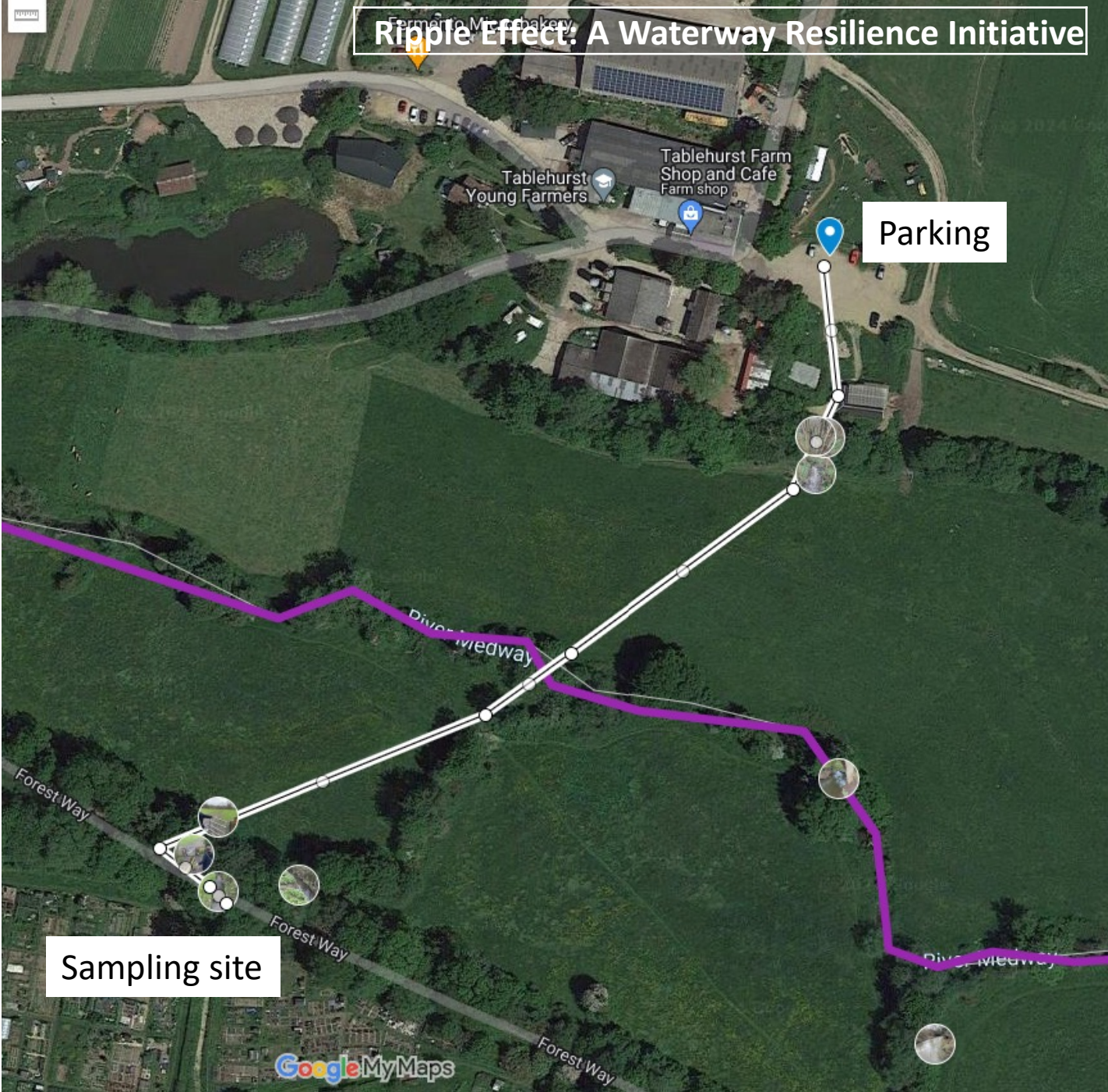
Ripple Effect: A Waterway Resilience Initiative



Forest Row FR4

Tablehurst shop and café carpark, sampling from stream not river

Site Code:	FR4
River site coordinates:	51°05'48.7"N 0°02'36.7"E
What3words sampling site:	///frozen.verve.observes
Access / parking location:	51°05'54.8"N 0°02'46.1"E
What3words access/parking:	///eruptions.curvy.reassured



Forest Row FR5

Royal Ashdown Forest Golf Club, just east of bridge over tributary

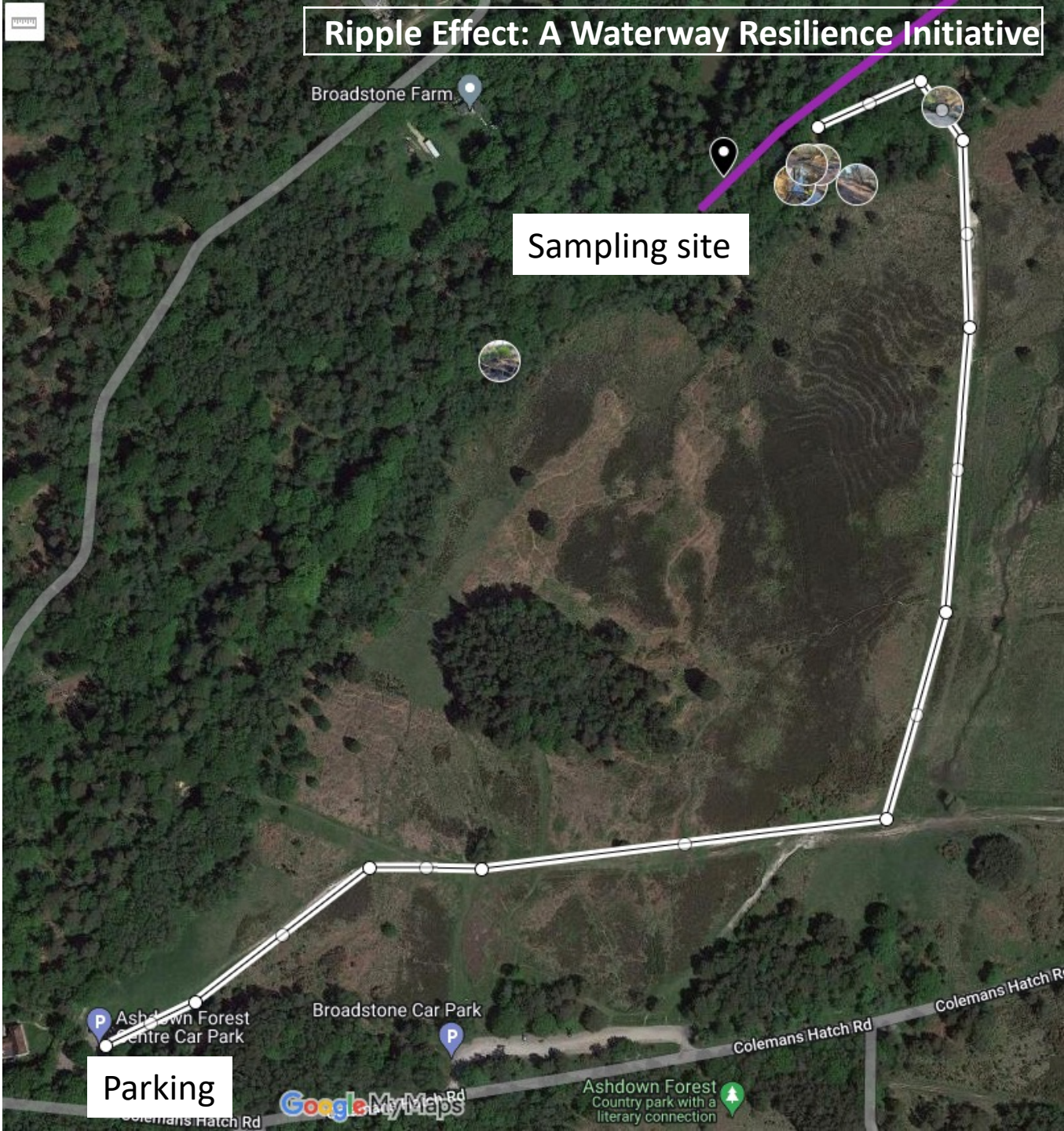
Site Code:	FR5
River site coordinates:	51°05'13.8"N 0°02'32.0"E
What3words sampling site:	///front.lobbed.bloom
Access / parking location:	51°05'19.5"N 0°02'31.5"E
What3words access/parking:	///juggled.propelled.tastes



Hartfield HF1

Ashdown Forest Centre, 1km walk to tributary

Site Code:	HF1
River site coordinates:	51°04'38.1"N 0°02'59.1"E
What3words sampling site:	///smudges.breed.purifier
Access / parking location:	51°04'21.9"N 0°02'38.0"E
What3words access/parking:	///duplicate.ants.utensil



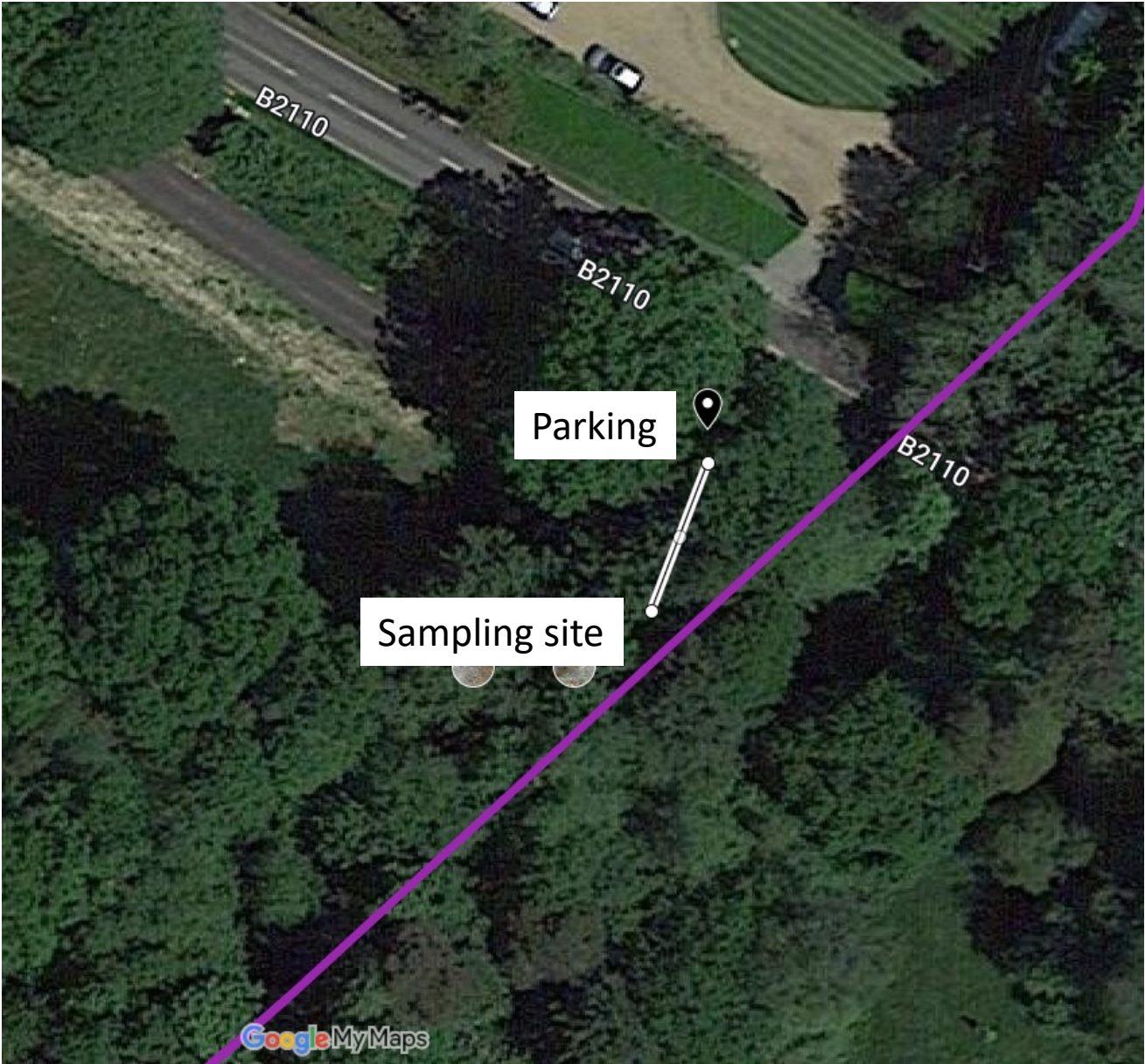
Hartfield HF2

Pull off main road, tuck vehicle in to allow access

Site Code:	HF2
River site coordinates:	51°05'22"N 0°03'34"E
What3words sampling site:	///notices.twisting.headless
Access / parking location:	51°05'22.6"N 0°03'34.4"E
What3words access/parking:	///trucks.scorched.positive



Ripple Effect: A Waterway Resilience Initiative



Hartfield HF3

Emily's farm, notification required via email: emilymunn@gmail.com

Site Code:	HF3
River site coordinates:	51°06'13.8"N 0°05'32.0"E
What3words sampling site:	///into.replaying.hunt
Access / parking location:	51°06'03.0"N 0°05'37.9"E
What3words access/parking:	///caravan.shrub.scramble



Ripple Effect: A Waterway Resilience Initiative



Hartfield HF4

Ripple Effect: A Waterway Resilience Initiative

Hartfield Forest Way – stream feeding into main river ~500 metre walk

Site Code:	HF4
River site coordinates:	51°06'22.8"N 0°07'12.0"E
What3words sampling site:	///bookshop.stripped.archives
Access / parking location:	51°06'21.2"N 0°06'45.6"E
What3words access/parking:	///crescendo.shackles.polished



Hartfield HF5

Beech Green Ln, Hartfield, ~500 metre east along Forest Way Country Park, stream feeding into river

Site Code:	HF5
River site coordinates:	51°06'35.0"N 0°08'50.1"E
What3words sampling site:	///soaps.superhero.human
Access / parking location:	51°06'28.7"N 0°08'23.0"E
What3words access/parking:	///postings.secrets.blackbird



Ripple Effect: A Waterway Resilience Initiative



Hartfield HF7 Owletts Farm

Hammerwood Road, Ashurst Wood, towards Owletts Farm. Turn off the road at Dog Gate Lodge (house), park side of entrance to public path (allow enough space for horses). At the end of the 400m path to the sampling site, turn left straight after the small, stone bridge.

Site Code:	HF7 Owletts Farm
River site coordinates:	51°07'38.3"N 0°02'55.0"E
What3words sampling site:	///lend.signal.clocks
Access / parking location:	51°07'26.1"N 0°02'57.9"E
What3words access/parking:	///extremely.bookmark.deeply



Ripple Effect: A Waterway Resilience Initiative



Groombridge GB1

Ripple Effect: A Waterway Resilience Initiative

Forest Way Country Park, 500 metre walk east, access via small gate

Site Code:	GB1
River site coordinates:	51°06'38.3"N 0°10'03.8"E
What3words sampling site:	///opinion.refuse.sensibly
Access / parking location:	51°06'41.4"N 0°09'43.8"E
What3words access/parking:	///raven.scorching.reap

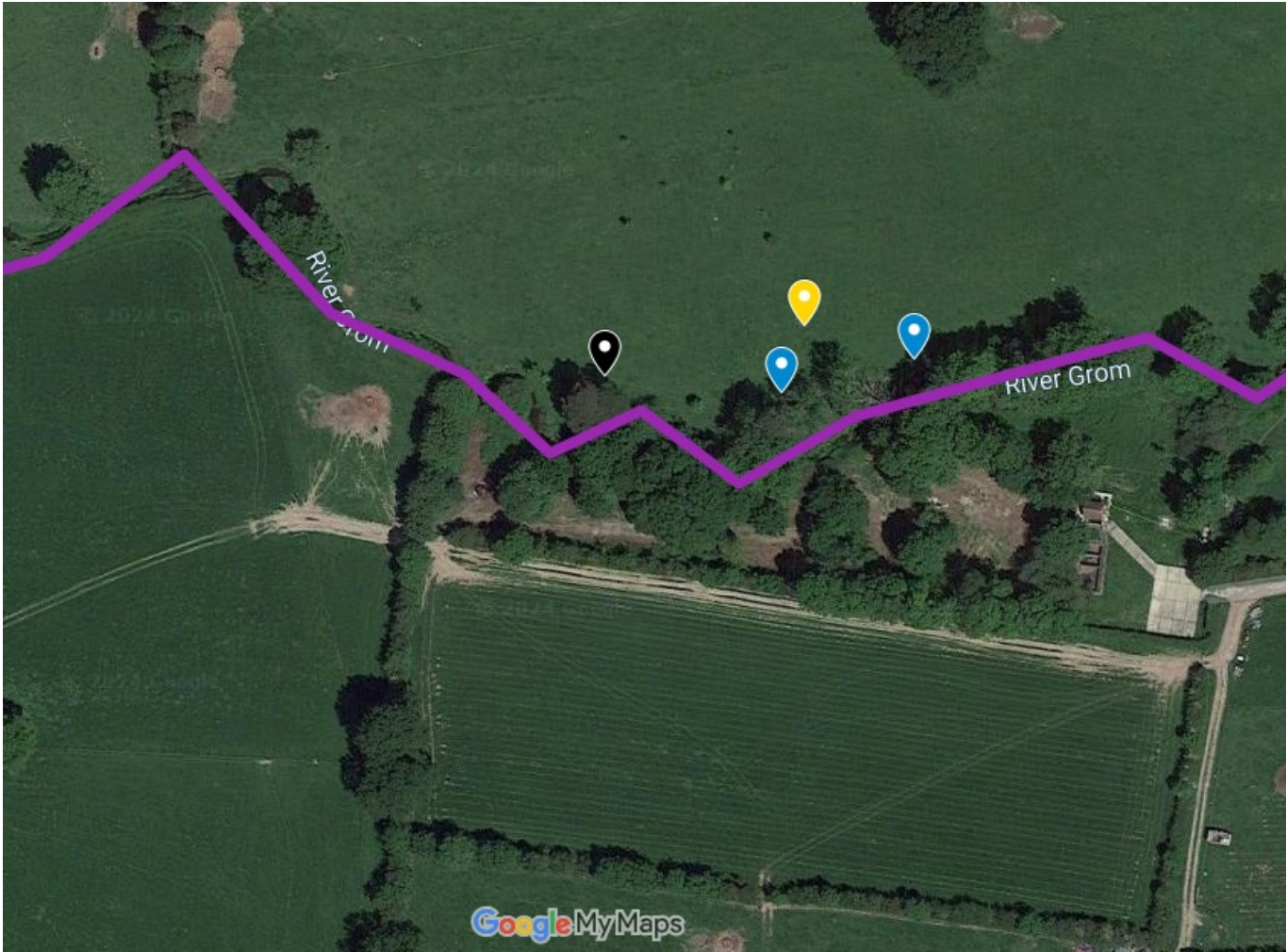


Groombridge GB2

Ripple Effect: A Waterway Resilience Initiative

Anglers only site near TWS outfall, access for eDNA TBC

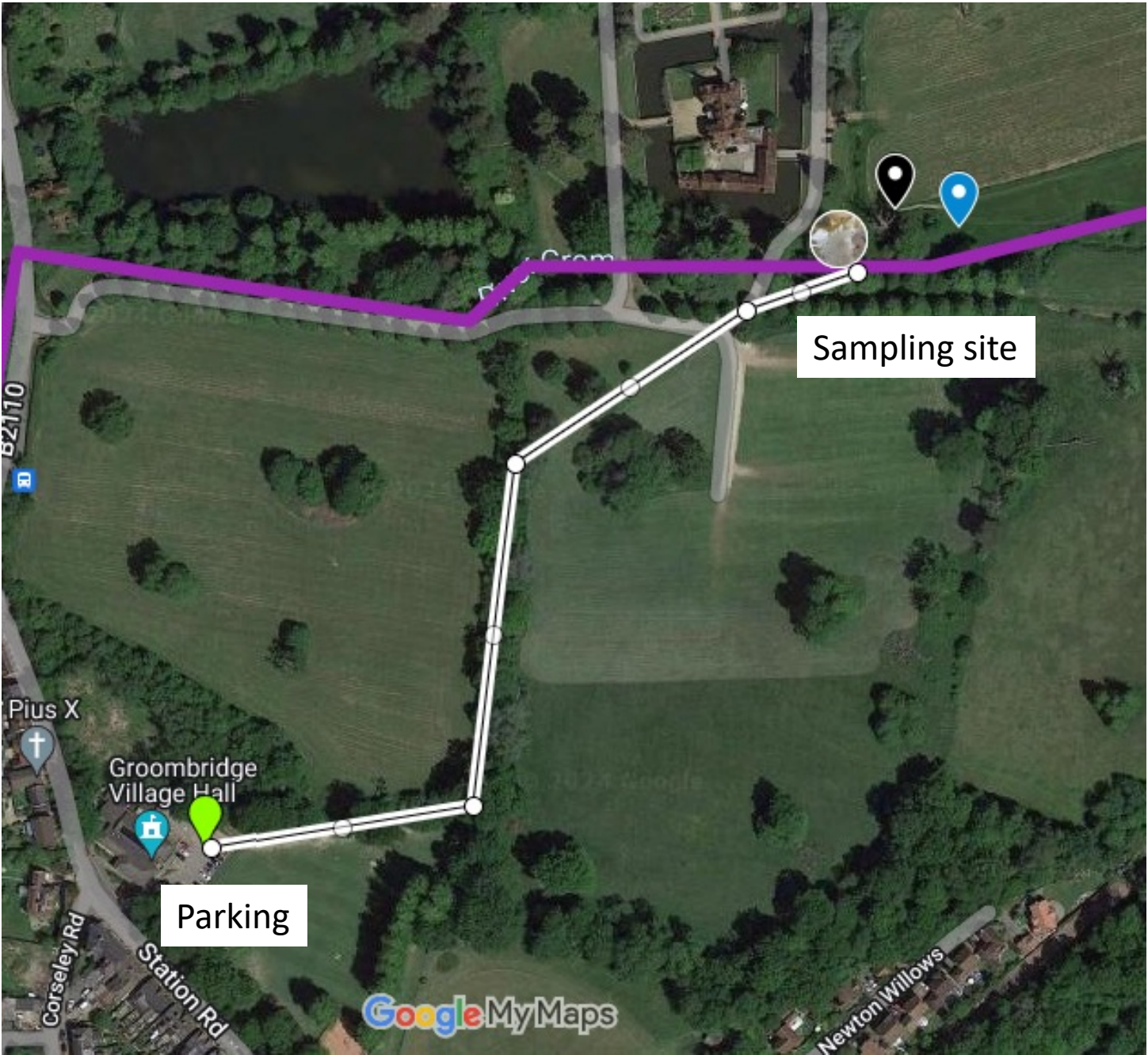
Site Code:	GB2
River site coordinates:	
What3words sampling site:	
Access / parking location:	
What3words access/parking:	



Groombridge GB3

Groombridge village hall parking – walk ~500 metres to Groombridge Place

Site Code:	GB3
River site coordinates:	51°07'00.5"N 0°11'24.4"E
What3words sampling site:	///breakaway.lobbed.learns
Access / parking location:	51°06'52.7"N 0°11'11.3"E
What3words access/parking:	///handicaps.diagram.puddings



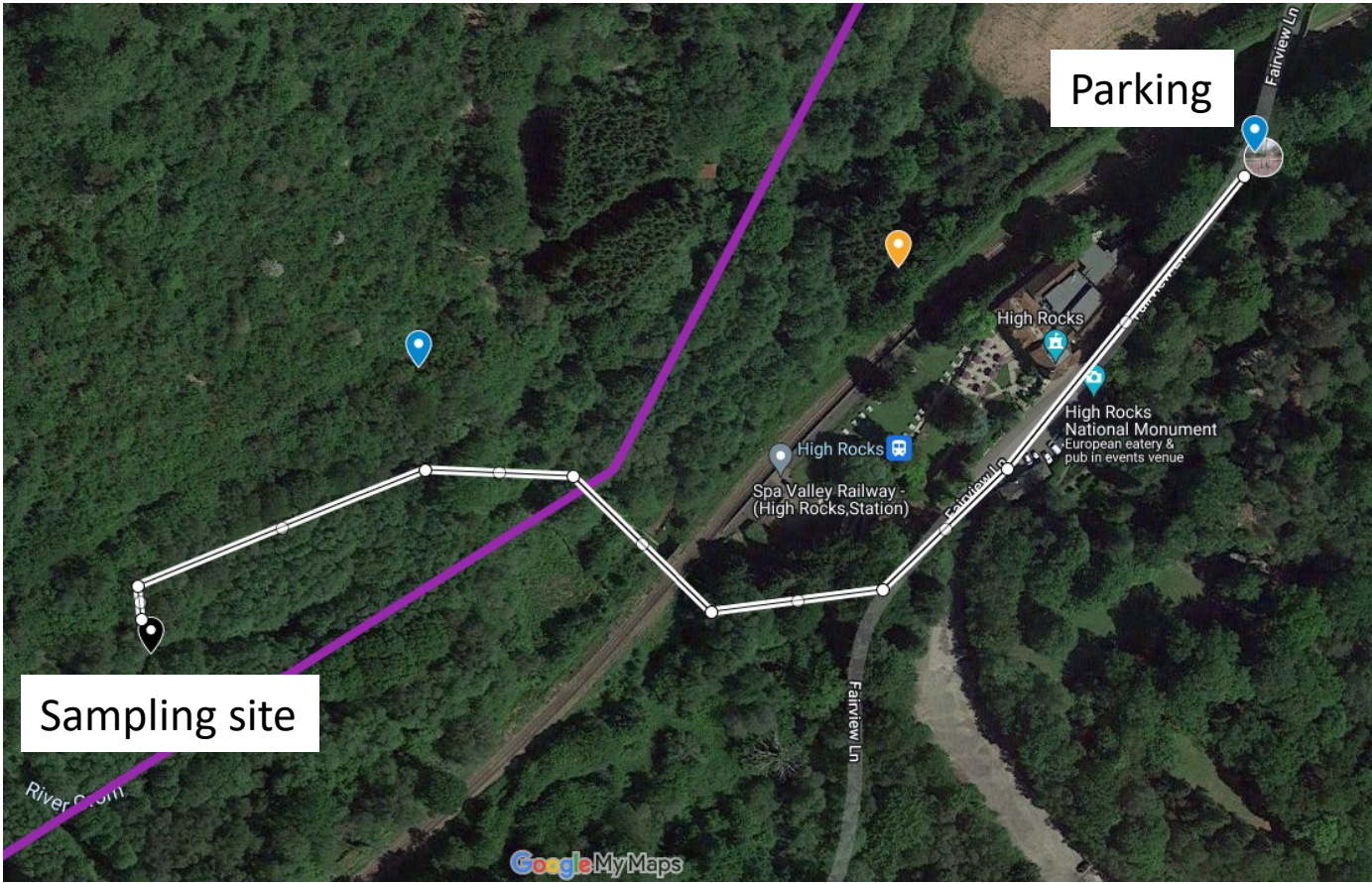
Groombridge GB4

High rocks, parking side of road BEFORE inn, walk ~500 metres

Site Code:	GB4
River site coordinates:	51°07'18.9"N 0°13'17.7"E
What3words sampling site:	///because.column.arrow
Access / parking location:	51°07'23.6"N 0°13'34.9"E
What3words access/parking:	///pods.spines.bulk



Ripple Effect: A Waterway Resilience Initiative



Groombridge GB5

Ripple Effect: A Waterway Resilience Initiative

Tunbridge Wells Garden centre car park, walk through back, off road / no path site

Site Code:	GB5
River site coordinates:	51°07'24.7"N 0°14'38.2"E
What3words sampling site:	///euphoric.forensic.eggshell
Access / parking location:	51°07'26.6"N 0°14'49.2"E
What3words access/parking:	///juggled.dared.towels

